

# Company Profile

Bringing always best service being the best partner



# About Us

---

## Greeting's

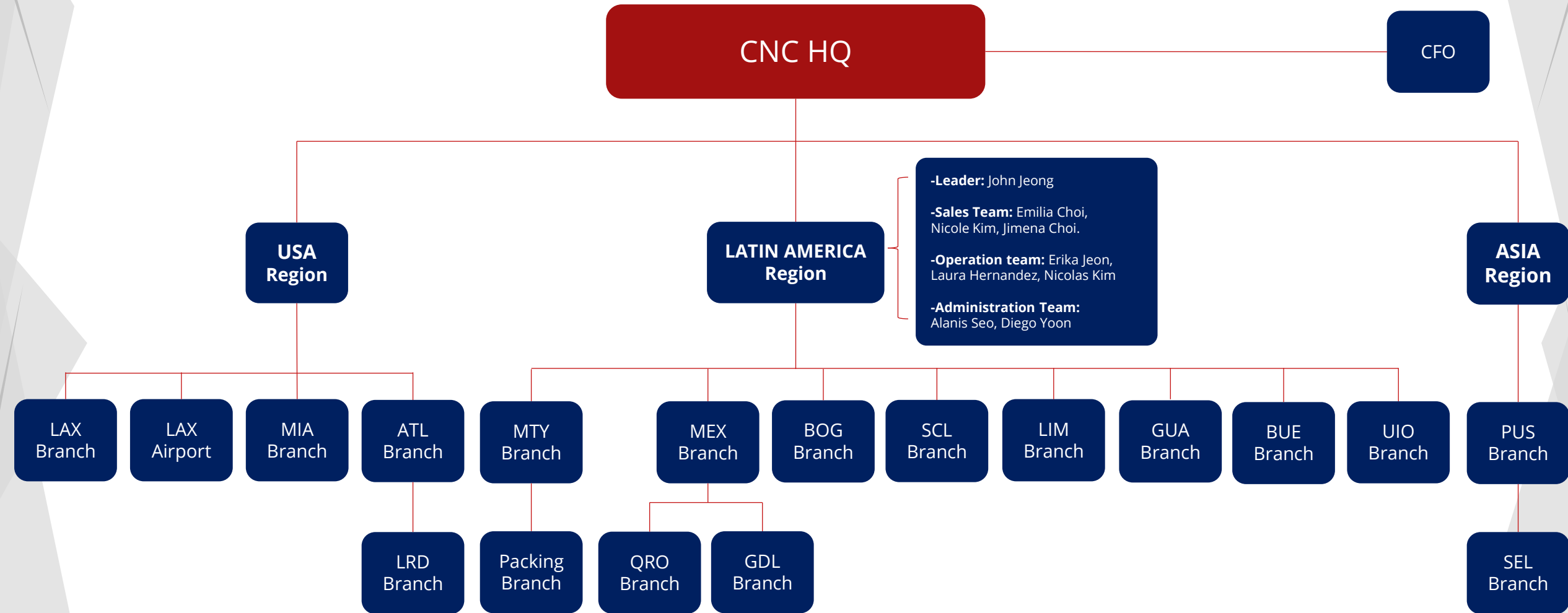
Founded in 1991, CNC Group provides international logistics services, specializing in project, plant, and break-bulk movements in the Central and South Americas. We are headquartered in Los Angeles and over the past 30 years, we have become one of the leading freight forwarders in the world backed by comprehensive knowledge and logistics know-how throughout the Central and South American markets. We currently have sixteen office locations throughout seven countries. While our heritage traces back to South Korea, we currently serve customers from all hemispheres of the globe through a wide network of branch offices, partner offices, and entrusted agents.

I would like to thank all our customers and partners for helping us become who we are today. Some of you have been with CNC from the very beginning and I am excited to see what the future has in store for our relationship. The logistics industry is and will always be a competitive one and I know you have many choices when it comes to selecting your logistics partner.

I sincerely appreciate you for giving CNC the opportunity to earn your trust and your business.



# Company Organizational Chart



# Main Business Information

## Forwarding



### Ocean Forwarding

International Logistics



### Air Forwarding

International Logistics



### Trucking

Border Crossing  
and Trucking



### Customs

Custom brokerage service



## Warehouse

### Warehouse

C.F.S., Picking, Sequence,  
IN/OUT



### KD Business

Packing, Quality Inspection



## Projects

### Project Cargo

Construction site Logistics,  
Energy plant Logistics



### Exhibition Logistics

Trade Show, Exhibition



# KD Business (Center 1)

## Warehouse Business Development

### MTY Warehouse specification

Area	7,700 m2 (EXPANDING)
Employees	110 Day Shift 40 Night Shift
Forklift	4 Gasoline 6 Electric
Packing Line:	6 Sleeve Line 6 Box Line
Production:	2 Cutting line 2 DYE cutting line
Dock	20 Docks 1 Floor ramp
Auto-part Handling:	Lamp, Key set, Airbags, Brake, Cables, Screw, Master Booster, Antenna, Buttons



### ► Knock Down Business

- ▷ Auto-part KD packing (KIA & HYUNDAI)
- ▷ Exported to Brazil & US



### ► Box Production

- ▷ Carton Box, Corrugated Plastic boxes
- ▷ Plastic packing material seal



### ► Overmentioned Packing

- ▷ Design packing specification
- ▷ A to Z service for overmentioned



### ► 3PL Service

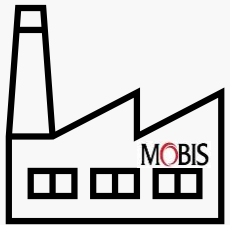
- ▷ from storage to production line service
- ▷ Inventory control and order processing.



# CKD Business (Center 2 & 3)

## ► 2023 CKD Business Center

- ▷ Project: Hyundai & KIA CKD Center (Kia Rio)
- ▷ Auto-Part exported to: Vietnam, Ecuador, Uzbekistan
- ▷ Expand Business area and Auto part Manufacturer Plan:
  - New CKD Center 2 building under construction.
    - 13,000m2 of construction in 23,000m2 of land
  - CKD Center 3 building planned to operating in 2024.
    - 14,000m2 of construction in 24,000m2 of land



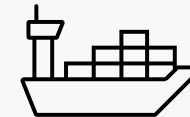
**KIA Auto-part  
Manufacturer**



**Trucking**



**CNC KD Center**



**Export**



**Car  
Manufacturer**

# Project Cargo

CNC regularly moves over 1 million tons of air freight and 500,000 cubic meters of ocean freight each year. These are a few memorable projects that we have undertaken of which we are especially proud.

## Major Projects

Torreon Mexico Hanwha Q-CELLs Solar Farm  
Construction (2,000 TEU)

Peru Moquegua Copper mine Substation (1,500 ton)

### multiple over-dimensioned projects for:

Dk Ramos, LS Automotive, Hyundai Translead, Daikyonishikawa, Daedong, Daeyoung, SPM Auto parts, POSCO MWPC and a lot of customers.





# Exhibition Logistics

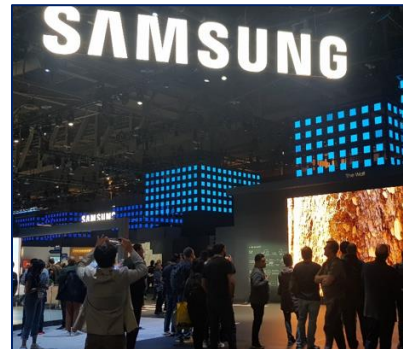
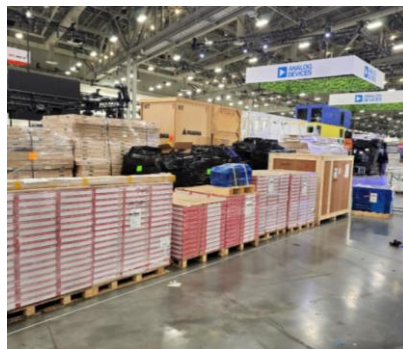
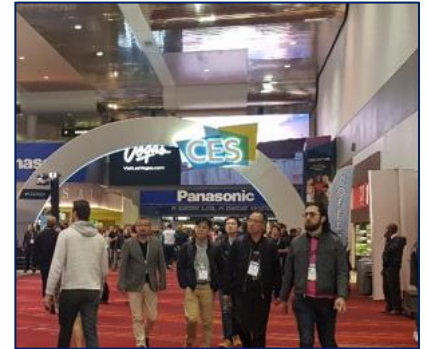
## Exhibition

### Specializing in:

- 【Exhibition Freight Handling】
- 【TIB & CARNET Clearance】
- 【Exhibition Planning & Consulting】
- 【Event Site Coordination】
- 【Diplomatic Pouch Handling】

### Experiences:

- 【Consumer Electronics Show (CES)】
- 【MIAMI Boat Show】
- 【Peru Air Force Show】
- 【Samsung Display Sales Exhibition】
- 【XPRIZE AVATAR Competition】
- 【Multiple Music Concerts】





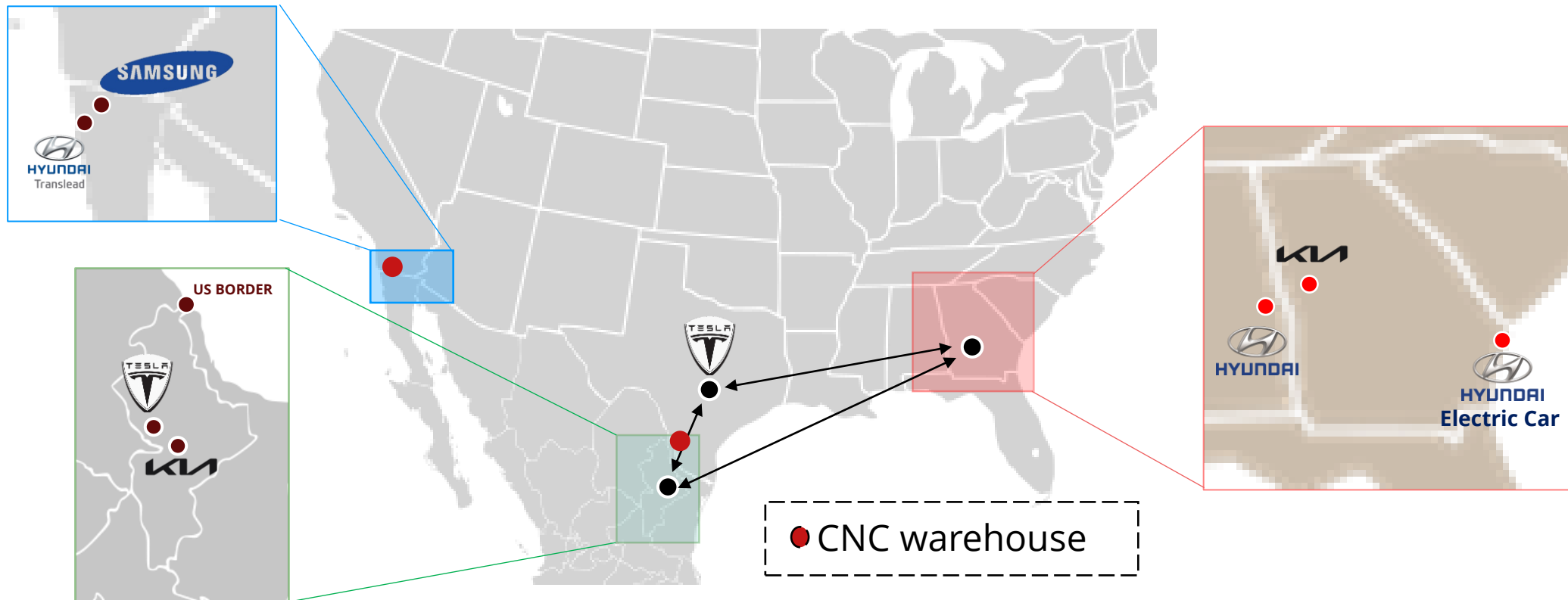
# Border Crossing

## ► Industry MEX-US Border Zone:

- ▷ Nuevo Leon Mexico → KIA Plant & Tesla Plant
- ▷ Texas, US → Tesla Giga Factory
- ▷ Georgia, US → KIA Plant & Hyundai Electric Car Plant
- ▷ Alabama, US → Hyundai Plant
- ▷ Tijuana, Mexico → Samsung & Hyundai Translead

## ► CNC in Border:

- ▷ Trucking in this area and Border Crossing
- ▷ Custom Clearance and consulting
- ▷ Warehouse In Othay Mesa, CA
- ▷ Warehouse In Laredo, TX



# Contact Us

County	Branch	Address	Contact	County	Branch	Address	Contact
US	HQ	12217 Rosecrans Avenue, Norwalk, CA 90650, USA	+1 310 670 7121 <a href="mailto:lax@cncworldwide.com">lax@cncworldwide.com</a>	COLOMBIA	BOG	Av. El Dorado # 68 C – 61 OF 213, Bogota, Cundinamarca, Colombia	+57 1 744 3458 <a href="mailto:bog@cncworldwide.com">bog@cncworldwide.com</a>
	LAX (C.F.S)	5343 W Imperial Highway, Ste 200, Los Angeles, CA 90045, USA	+1 310 670 0006 <a href="mailto:lax@cncworldwide.com">lax@cncworldwide.com</a>	CHILE	SCL	Badajos 130, Oficina 606, Las Condes, Santiago, Chile	+56 2 2954 7793 <a href="mailto:scl@cncworldwide.com">scl@cncworldwide.com</a>
	ATL	1325 Satellite Blvd NW Suite 104, Suwanee GA 30024, USA	+1 770 592 8888 <a href="mailto:atl@cncworldwide.com">atl@cncworldwide.com</a>		IQQ	Manzana 12, Galpon 18, Local 12, Zofri, Iquique, Chile	+56 57 226 9421 <a href="mailto:iqq@cncworldwide.com">iqq@cncworldwide.com</a>
	MIA	2500 NW 79th Avenue, Ste 291, Doral, FL 33122, USA	+1 305 592 3568 <a href="mailto:mia@cncworldwide.com">mia@cncworldwide.com</a>	PERU	LIM	Calle Uno Oeste 061, Oficina 302, Urb. Corpac, San Isidro, Lima, Peru	+51 1 770 0263 <a href="mailto:lim@cncworldwide.com">lim@cncworldwide.com</a>
	LRD	407 Interamerica Boulevard, Laredo, TX 78045, USA	+1 956 413 8800 <a href="mailto:lrd@cncworldwide.com">lrd@cncworldwide.com</a>	ARGENTINA	BUE	Dr. Enrique Finochietto 627, C1143ABE CABA, Argentina	+54 11 5365 8303 <a href="mailto:bue@cncworldwide.com">bue@cncworldwide.com</a>
MEXICO	MEX	Berna 3, Piso 6to, Col. Juarez , Del. Cuauhtemoc, 06600, CDMX, Mexico	+52 55 5511 2455 <a href="mailto:mex@cncworldwide.com">mex@cncworldwide.com</a>	GUATEMALA	GUA	5A Avenida 5-55, Torre 1, Oficina 204 Ciudad de Guatemala 01014, Guatemala	+502 2386 8816 <a href="mailto:gua@cncworldwide.com">gua@cncworldwide.com</a>
	GDL	Federalismo Sur #924 1-A, Col. Moderna, 44190 Guadalajara, Jalisco, Mexico	+52 33 2267 5241 <a href="mailto:gdl@cncworldwide.com">gdl@cncworldwide.com</a>	ECUADOR	UIO	Avenida Rio Amazonas E3-39, Edificio La Previsora, Oficina 109, Quito 170507 Ecuador	+593 99 705 3450 <a href="mailto:uio@cncworldwide.com">uio@cncworldwide.com</a>
	QRO	Plaza Checkpoint, Av. La Montaña 94, Local 64, Del. Santa Rosa Jauregui, Col. Puerto de Aguirre, Querétaro, CP. 76220	+52 442 628 5677 <a href="mailto:luna.park@cncglobalmx.com">luna.park@cncglobalmx.com</a>		PUS	Rm. 3304, Centum Skybiz, Centumjungang-ro 97, Haeundae-gu, Busan, South Korea	+82 51 468 7121 <a href="mailto:pus@cncworldwide.com">pus@cncworldwide.com</a>
	ZLO	Puerto Interior de San Pedrito B, tramo 5, Manzanillo, Tapeixtles, C.P. 28876	+52 55 5511 2455 <a href="mailto:mex@cncworldwide.com">mex@cncworldwide.com</a>	KOREA	SEL	Rm. 906, Hanwha Obelisk, Mapo-daero 33 Mapo-gu, Seoul, South Korea	+82 2 712 7127 <a href="mailto:sel@cncworldwide.com">sel@cncworldwide.com</a>
	MTY	Local 12 Av. Miguel Aleman 804, 66477 San Nicolas de los Garza, NL, Mexico	+52 81 1334 0964 <a href="mailto:mty@cncworldwide.com">mty@cncworldwide.com</a>				
	MTY (WH)	Cardinal Business Park, Pesqueria Los Ramones 770 B, N3, 66650 Pesqueria, NL, Mexico	+52 81 1759 0344 <a href="mailto:mty@cncworldwide.com">mty@cncworldwide.com</a>				



THANK YOU

---



[www.cncworldwide.com](http://www.cncworldwide.com)