

Company Profile

Bringing always best service being the best partner



About Us

Greeting's

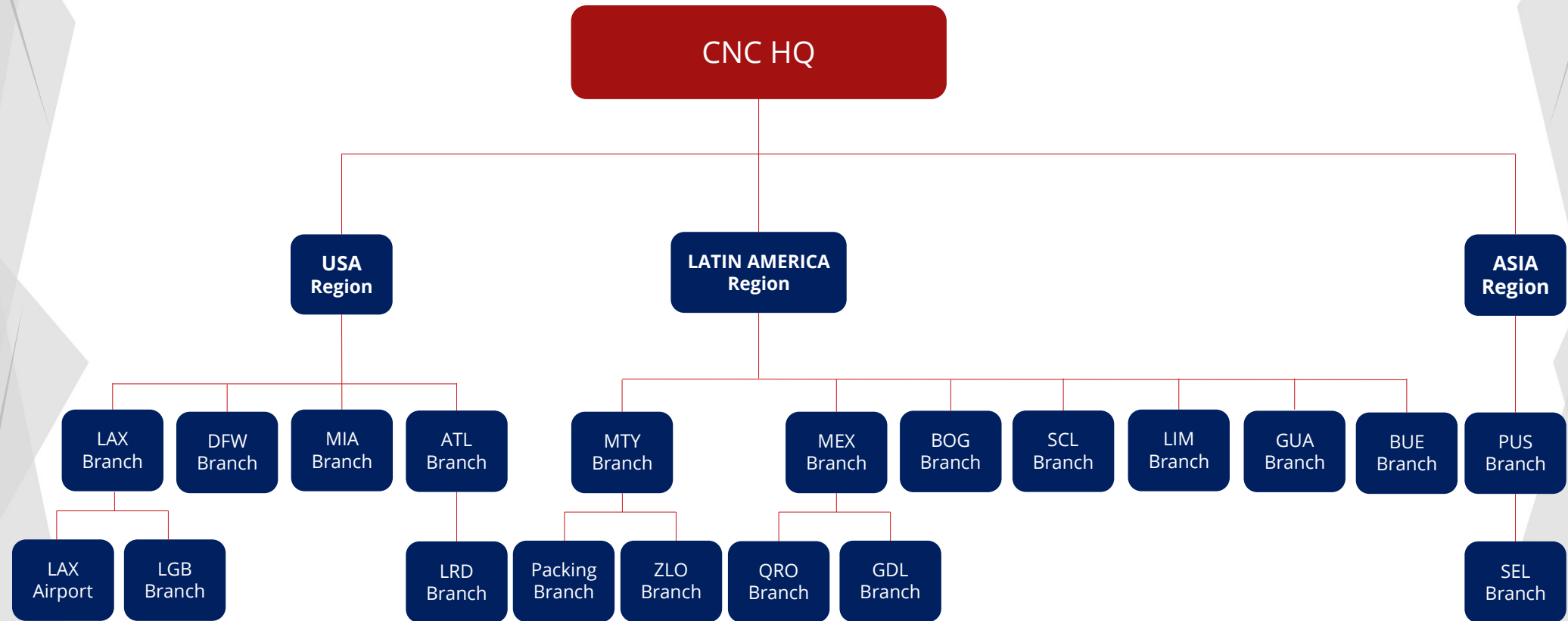
Founded in 1991, CNC Group provides international logistics services, specializing in project, plant, and break-bulk movements in the Central and South Americas. We are headquartered in Los Angeles and over the past 30 years, we have become one of the leading freight forwarders in the world backed by comprehensive knowledge and logistics know-how throughout the Central and South American markets. We currently have twenty office locations throughout seven countries. While our heritage traces back to South Korea, we currently serve customers from all hemispheres of the globe through a wide network of branch offices, partner offices, and entrusted agents.

I would like to thank all our customers and partners for helping us become who we are today. Some of you have been with CNC from the very beginning and I am excited to see what the future has in store for our relationship. The logistics industry is and will always be a competitive one and I know you have many choices when it comes to selecting your logistics partner.

I sincerely appreciate you for giving CNC the opportunity to earn your trust and your business.



Company **Organizational** Chart



CNC History

1989

Founded in Seoul, South Korea, under the name Cosmo Airfreight Consolidators Ltd

1991

Expanded internationally with the opening of a branch office in Los Angeles, California, USA

2000

Separated from the Seoul office to establish itself as an independent company, while continuing to use the Cosmo trademark

2001

Launched CNC (Continental Network of Cosmo), honoring its roots while laying the foundation for global expansion

2002

Opened the first CNC branch office in Miami, Florida, USA, establishing a gateway for logistics services to Latin America

2006

Established the first international CNC branch office in Mexico City, Mexico, marking the start of rapid global growth

2007-2021

Expanded further with 16 additional offices across the Americas and Asia, becoming a leading freight forwarder specializing in Latin American logistics

2022

Opened an 84,000-square-foot warehouse in Monterrey, Mexico, to support logistics solutions for local vehicle manufacturing plants

2024

Completed construction of a new 110,000-square-foot warehouse in Monterrey, Mexico, to enhance support for the region's growing operations

2025

Started in-house customs brokerage services with a new office in Manzanillo, Mexico, streamlining imports and exports across the Mexican supply chain

Main Business Information

Forwarding



Ocean Forwarding

FCL/LCL Import/Export
Bulk



Air Forwarding

Air Import/Export
Handcarry
Charter



Trucking

Border Crossing
Trucking



Customs

Custom brokerage service
Tariff Consulting



Warehouse

Warehouse

C.F.S., Picking, Sequence,
IN/OUT



KD Business

Packing, Quality Inspection



Projects

Project Cargo

Construction logistics
Infrastructure logistics



Exhibition Logistics

Trade Show, Exhibition



Warehouse Business (Mexico)

MONTERREY KIA FACTORY (2 WAREHOUSE)

Warehouse
Business
Development

MTY Warehouse specification	
Area	18,000 m2
Employees	150 Day Shift 80 Night Shift
Forklift	7 Gasoline 10 Electric
Packing Line:	10 Sleeve Line 9 Box Line
Production:	2 Cutting line 2 DYE cutting line
Dock	40 Docks 4 Floor ramp
Auto-part Handling:	Lamp, Key set, Airbags, Brake, Cables, Screw, Master Booster, Antenna, Buttons



► Knock Down Business

- ▷ Auto-part KD packing (KIA & HYUNDAI)
- ▷ Exported to Brazil & US



► Box Production

- ▷ Carton Box, Corrugated Plastic boxes
- ▷ Plastic packing material seal



► Overmentioned Packing

- ▷ Design packing specification
- ▷ A to Z service for overmentioned



► 3PL Service

- ▷ from storage to production line service
- ▷ Inventory control and order processing.

Warehouse Business (US)

LAX AIRPORT WAREHOUSE / LONG BEACH WAREHOUSE

Warehouse
Business
Development

USA Warehouse specification	
Area	10,000 m2
Employees	40 Day Shift 10 Night Shift
Forklift	10 Gasoline
Consol line	5 Line
Dock	15 Docks 2 Floor ramp
Trucks	1 ULD Truck 2 Bobtail 1 53FT Dry



► CFS

▷ 24/7 Pick up

▷



► 3PL

▷ Storage, IN/OUT, Transloading

▷ Distribution



► CONSOL

▷ Air cargo PMC consoling

▷ Container Consol



► PACKING

▷ Wooden and Box Packing

▷

Project Cargo

CNC regularly moves over 1 million tons of air freight and 500,000 cubic meters of ocean freight each year, These are a few memorable projects that we have undertaken of which we are especially proud.

Major Projects

Torreon Mexico Hanwha Q-CELLs Solar Farm
Construction (2,000 TEU)

Peru Moquegua Copper mine Substation (1,500 ton)

PEMEX Refinery construction

Multiple over-dimensioned projects



Exhibition Logistics

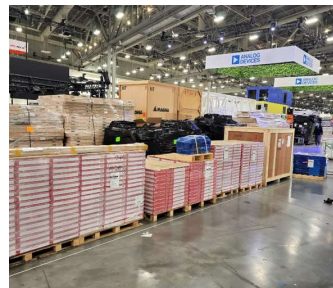
Exhibition

Specializing in:

- 【Exhibition Freight Handling】
- 【TIB & CARNET Clearance】
- 【Exhibition Planning & Consulting】
- 【Event Site Coordination】
- 【Diplomatic Pouch Handling】

Experiences:

- 【Consumer Electronics Show (CES)】
- 【MIAMI Boat Show】
- 【Peru Air Force Show】
- 【Samsung Display Sales Exhibition】
- 【XPRIZE AVATAR Competition】
- 【Multiple Music Concerts】



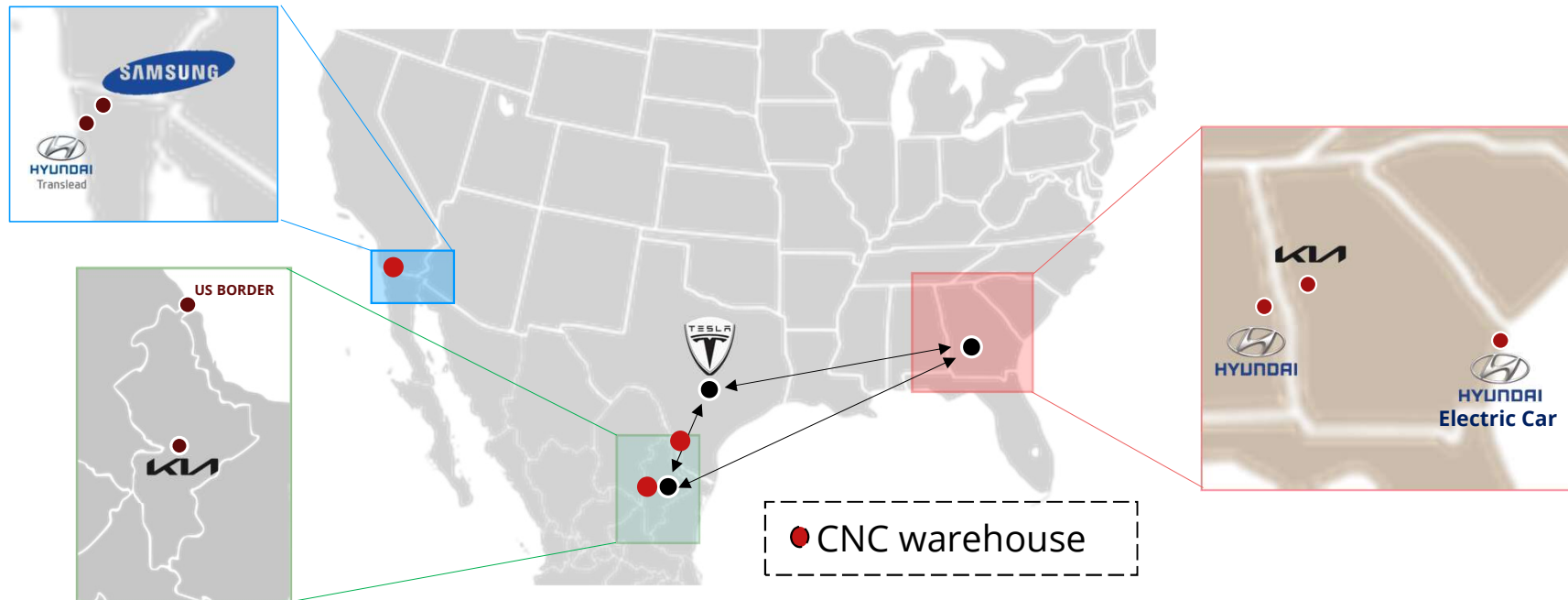
Border Crossing

► Industry MEX-US Border Zone:

- ▷ Nuevo Leon Mexico → KIA Plant & Tesla Plant
- ▷ Georgia, US → KIA Plant & Hyundai Electric Car Plant
- ▷ Alabama, US → Hyundai Plant
- ▷ Tijuana, Mexico → Samsung & Hyundai Translead

► CNC in Border:

- ▷ Trucking in this area and Border Crossing
- ▷ Custom Clearance and consulting
- ▷ Warehouse In Othay Mesa, CA
- ▷ Warehouse In Laredo, TX



Customs Brokerage

CNC independently prepares its own import/export declarations and based on extensive knowledge and experience, provides tailored solutions and advanced logistics services that stay ahead of the competition.

MANZANILLO
PORT

Customs Licence: 1852

MTY
AIRPORT

Customs Licence: 1852

NUEVO LAREDO
BORDER

Customs Licence: 3601

ENTRY
PEDIMENTO

TARIFF
CLASSIFIER

ORIGIN
INSPECTION

TERMINAL
HANDLING

CNC Branch Map

CNC LAX

LAX@cncworldwide.com

CNC LGB

LGB@cncworldwide.com

CNC GDL

GDL@cncworldwide.com

CNC QRO

QRO@cncworldwide.com

CNC ZLO

ZLO@cncworldwide.com

CNC MEX

MEX@cncworldwide.com

CNC LIM

LIM@cncworldwide.com

CNC IQQ

IQQ@cncworldwide.com

CNC SCL

SCL@cncworldwide.com

CNC ATL

ATL@cncworldwide.com

CNC DFW

DFW@cncworldwide.com

CNC LRD

LRD@cncworldwide.com

CNC MIA

MIA@cncworldwide.com

CNC MTY/PKG

MTY@cncworldwide.com

CNC GUA

GUA@cncworldwide.com

CNC BOG

BOG@cncworldwide.com

CNC BUE

BUE@cncworldwide.com

CNC SEL

SEL@cncworldwide.com

CNC PUS

PUS@cncworldwide.com



THANK YOU



Worldwide, Inc.

www.cncworldwide.com